



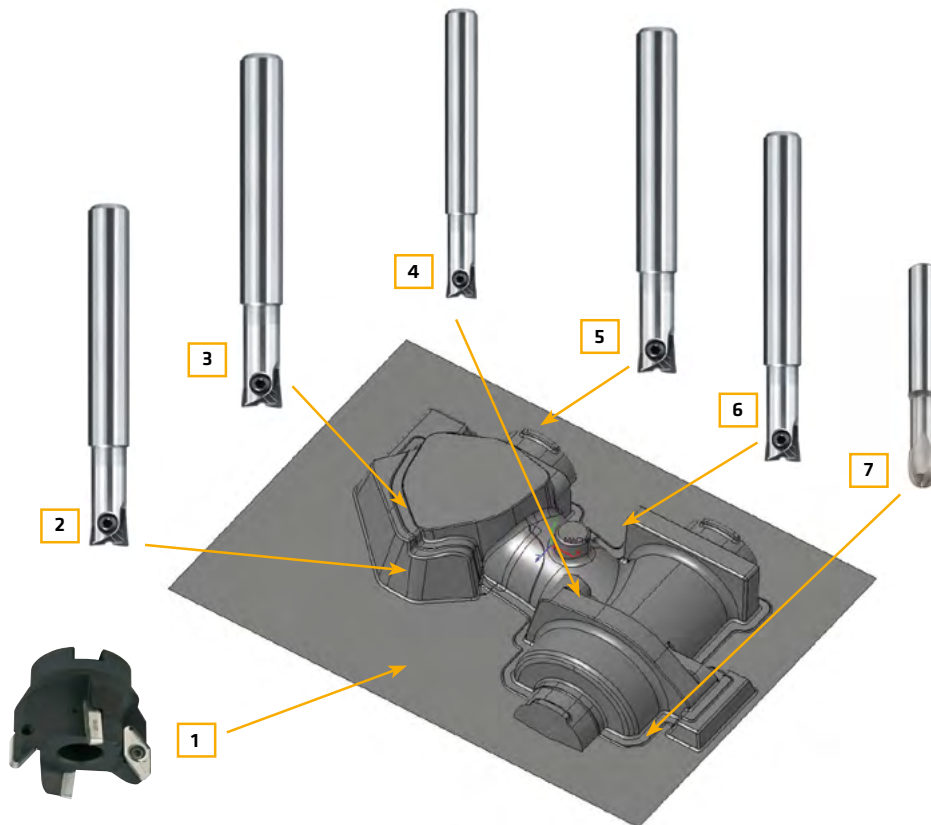
TOOLING AND COMPOSITES

MACHINABLE BOARDS

MILLING PARAMETERS

- Design and Styling Boards
- Model Boards
- Tooling Boards

MILLING PARAMETERS



The milling parameters for the specific machinable boards types were determined by LMT Kieninger GmbH using the model shown above.

Further information concerning the recommended milling tools can be obtained from the following address:

LMT Kieninger GmbH
 Vogesenstraße 23
 77933 Lahr
 Germany

Tel: +49 (0)7821 943-0
 Fax: +49 (0)7821 943-213
 info@kieninger.de
 www.kieninger.com

CALCULATION BASIS

1. FORM SYMBOLS

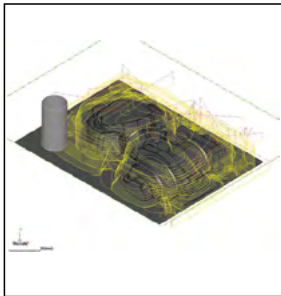
ae:	Cutting Width/Line spacing
D:	Diameter
z:	Feedrate per tooth
Vc:	Cutting speed
ap:	Cutting depth
n:	Revolutions
Vf:	Feed rate
z:	Number of teeth

2. CONVERSION FORMS

$V_c = \frac{n \cdot \pi \cdot d}{1000}$	[m/min]
$n = \frac{V_c \cdot 1000}{d \cdot \pi}$	[1/min]
$f_z = \frac{v_f}{z \cdot n}$	[mm]
$V_f = n \cdot f_z \cdot z$	[mm/min]



MILLING STEPS



STEP 1

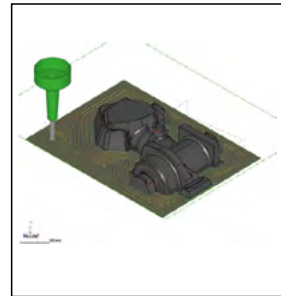
Roughing Z-constant
cutter head $\varnothing 42$ r3

Vc: 500 m/min.

fz: 0.5 mm

ap: 5.0 mm

ae: 30 mm



STEP 5

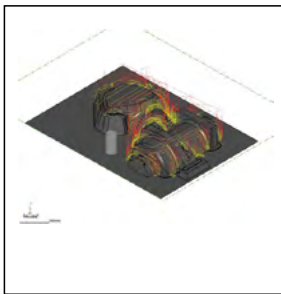
Finishing flat areas
WPB $\varnothing 8$ r1

Vc: 400 m/min.

fz: 0.1 mm

ap: 0.3 mm

ae: 4.0 mm



STEP 2

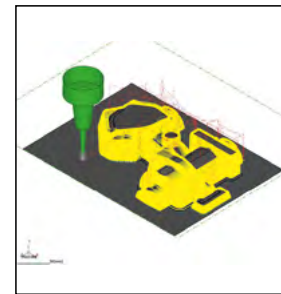
Roughing Z-constant rest
material WPB $\varnothing 20$ r4

Vc: 500 m/min.

fz: 0.5 mm

ap: 2.5 mm

ae: 10 mm



STEP 6

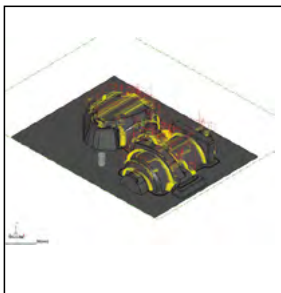
Roughing Z-constant and
optimizing WPR $\varnothing 8$ r4

Vc: 400 m/min.

fz: 0.1 mm

ap: 0.15 mm

ae: 0.3 mm



STEP 3

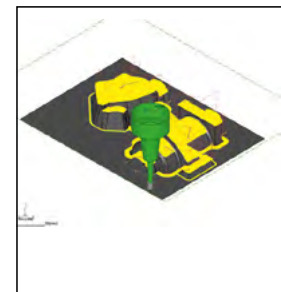
Roughing Z-constant
rest material WPR $\varnothing 12$ r6

Vc: 600 m/min.

fz: 0.2 mm

ap: 2.0 mm

ae: 2.0 mm



STEP 7

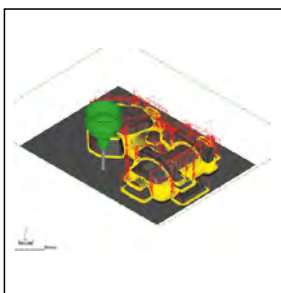
Rest material shapes
5-axis VHM $\varnothing 4$ r2

Vc: 200 m/min.

fz: 0.1 mm

ap: 0.1 mm

ae: 0.1 mm



STEP 4

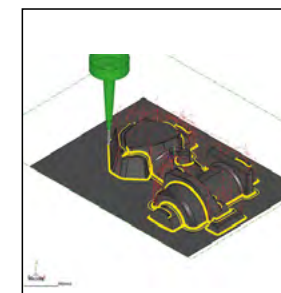
Roughing Z-constant rest
material WPR $\varnothing 6$ r3

Vc: 300 m/min.

fz: 0.15 mm

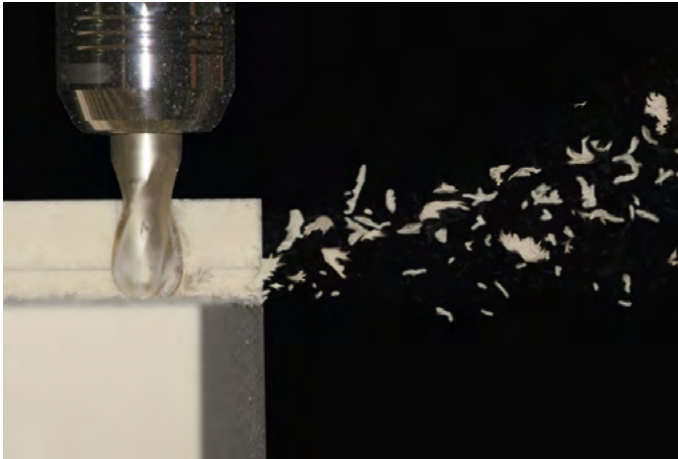
ap: 0.5 mm

ae: 0.5 mm



SikaBlock® M80/Labelite 8 GY

Design and styling Board



MILLING PARAMETERS

Milling steps	1	2	3	4	5	6	7
Strategy	Roughing Z-constant	Rest material Z-constant	Rest material Z-constant	Rest material Z-constant	Finishing flat areas	Finishing Z-constant	Finishing rest material shapes
Milling tool	Torus cutter	Torus copying cutter	Ball nose copying cutter	Ball nose copying cutter	Torus copying cutter	Ball nose copying cutter	Solid carbide ball nose cutter
Diameter [mm]	42	20	12	6	8	8	4
Number of teeth	3	2	2	2	2	2	2
Radius [mm]	3	4	6	3	1	4	2
Cutting speed (Vc) [m/min]	593	500	600	300	400	400	200
Revolutions [1/min]	4,500	8,000	15,900	16,000	16,000	16,000	16,000
Feedrate per tooth [mm]	1	0.8	0.2	0.2	0.15	0.15	0.15
Feed rate (Vf) [mm/min]	13,500	12,800	6,400	6,400	4,800	4,800	4,800
Cutting depth (ap) [mm]	5	2.5	2	0.5	0.3	0.15	0.1
Cutting Width / Line spacing (ae) [mm]	30	10	2	0.5	4	0.3	0.1

PROCESSING

- The material must be acclimatised to 18–25 °C prior to machining.
- Machining of the block is easily accomplished by sawing, milling or drilling with machines or by hand.
- Bonding areas must be clean, dry and free of dust and grease or oil.
- For bondings use e. g. Biresin® Foam Adhesive or Labelite Glue (for more information see Product Data Sheet).
- For correction or finishing of surface use Biresin® Spachtel orange (for more information see Product Data Sheet).

SikaBlock® M150/Labelite 15 IY

Design and styling Board



MILLING PARAMETERS

Milling steps	1	2	3	4	5	6	7
Strategy	Roughing Z-constant	Rest material Z-constant	Rest material Z-constant	Rest material Z-constant	Finishing flat areas	Finishing Z-constant	Finishing rest material shapes
Milling tool	Torus cutter	Torus copying cutter	Ball nose copying cutter	Ball nose copying cutter	Torus copying cutter	Ball nose copying cutter	Solid carbide ball nose cutter
Diameter [mm]	42	20	12	6	8	8	4
Number of teeth	3	2	2	2	2	2	2
Radius [mm]	3	4	6	3	1	4	2
Cutting speed (Vc) [m/min]	593	500	600	300	400	400	200
Revolutions [1/min]	4,500	8,000	15,900	16,000	16,000	16,000	16,000
Feedrate per tooth [mm]	0,74	0.5	0.2	0.2	0.15	0.15	0.15
Feed rate (Vf) [mm/min]	13,500	12,800	6,400	6,400	4,800	4,800	4,800
Cutting depth (ap) [mm]	5	2.5	2	0.5	0.3	0.15	0.1
Cutting Width / Line spacing (ae) [mm]	30	10	2	0.5	4	0.3	0.1

PROCESSING

- The material must be acclimatised to 18–25 °C prior to machining.
- Machining of the block is easily accomplished by sawing, milling or drilling with machines or by hand.
- Bonding areas must be clean, dry and free of dust and grease or oil.
- For bondings use e.g. Biresin® Foam Adhesive or Labelite Glue (for more information see Product Data Sheet).
- For correction or finishing of surface use Biresin® Spachtel orange (for more information see Product Data Sheet).

SikaBlock® M330/Labelite 25 YW

Design and styling Board



MILLING PARAMETERS

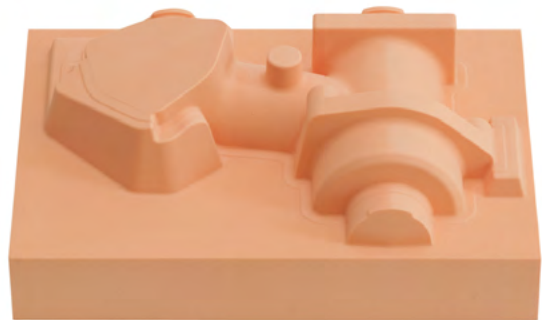
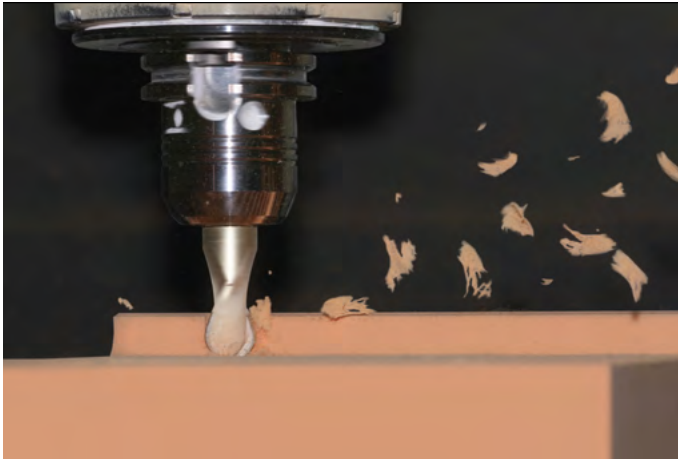
Milling steps	1	2	3	4	5	6	7
Strategy	Roughing Z-constant	Rest material Z-constant	Rest material Z-constant	Rest material Z-constant	Finishing flat areas	Finishing Z-constant	Finishing rest material shapes
Milling tool	Torus cutter	Torus copying cutter	Ball nose copying cutter	Ball nose copying cutter	Torus copying cutter	Ball nose copying cutter	Solid carbide ball nose cutter
Diameter [mm]	42	20	12	6	8	8	4
Number of teeth	3	2	2	2	2	2	2
Radius [mm]	3	4	6	3	1	4	2
Cutting speed (Vc) [m/min]	593	500	600	300	400	400	200
Revolutions [1/min]	4,500	8,000	15,900	16,000	16,000	16,000	16,000
Feedrate per tooth [mm]	0,74	0.5	0.2	0.2	0.15	0.15	0.15
Feed rate (Vf) [mm/min]	10,000	8,000	6,400	6,400	4,800	4,800	4,800
Cutting depth (ap) [mm]	5	2.5	2	0.5	0.3	0.15	0.1
Cutting Width / Line spacing (ae) [mm]	30	10	2	0.5	4	0.3	0.1

PROCESSING

- The material must be acclimatised to 18–25 °C prior to machining.
- Machining of the block is easily accomplished by sawing, milling or drilling with machines or by hand.
- Bonding areas must be clean, dry and free of dust and grease or oil.
- For bondings use e.g. Biresin® Foam Adhesive or Biresin® Kleber orange or Labelite Glue (for more information see Product Data Sheet).
- For correction or finishing of surface use Biresin® Spachtel orange (for more information see Product Data Sheet).

SikaBlock® M440/Labelite 35 OE

Design and styling Board

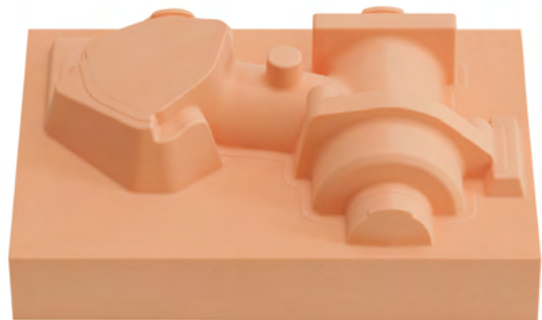
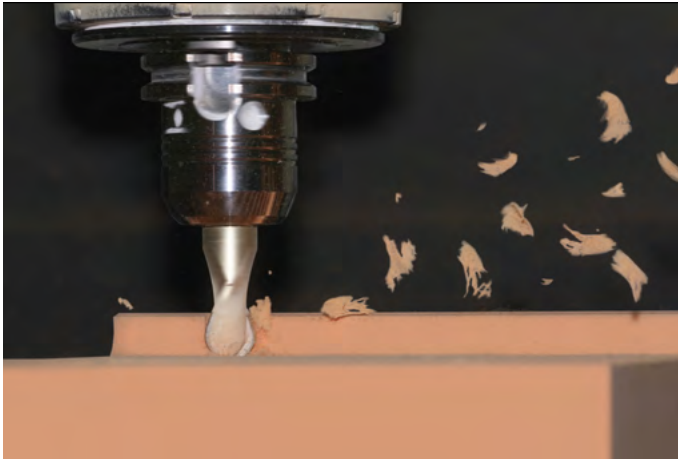


MILLING PARAMETERS							
Milling steps	1	2	3	4	5	6	7
Strategy	Roughing Z-constant	Rest material Z-constant	Rest material Z-constant	Rest material Z-constant	Finishing flat areas	Finishing Z-constant	Finishing rest material shapes
Milling tool	Torus cutter	Torus copying cutter	Ball nose copying cutter	Ball nose copying cutter	Torus copying cutter	Ball nose copying cutter	Solid carbide ball nose cutter
Diameter [mm]	42	20	12	6	8	8	4
Number of teeth	3	2	2	2	2	2	2
Radius [mm]	3	4	6	3	1	4	2
Cutting speed (Vc) [m/min]	593	500	600	300	400	400	200
Revolutions [1/min]	4,500	8,000	15,900	16,000	16,000	16,000	16,000
Feedrate per tooth [mm]	0,74	0.5	0.2	0.2	0.15	0.15	0.15
Feed rate (Vf) [mm/min]	10,000	8,000	6,400	6,400	4,800	4,800	4,800
Cutting depth (ap) [mm]	5	2.5	2	0.5	0.3	0.15	0.1
Cutting Width / Line spacing (ae) [mm]	30	10	2	0.5	4	0.3	0.1

PROCESSING

- The material must be acclimatised to 18–25 °C prior to machining.
- Machining of the block is easily accomplished by sawing, milling or drilling with machines or by hand.
- Bonding areas must be clean, dry and free of dust and grease or oil.
- For bondings use e.g. Biresin Foam Adhesive or Biresin® Kleber orange or Labelite Glue (for more information see Product Data Sheet).
- For correction or finishing of surface use Biresin® Spachtel orange (for more information see Product Data Sheet).

SikaBlock® M450/Labelite 45 PK Model Board



MILLING PARAMETERS							
Milling steps	1	2	3	4	5	6	7
Strategy	Roughing Z-constant	Rest material Z-constant	Rest material Z-constant	Rest material Z-constant	Finishing flat areas	Finishing Z-constant	Finishing rest material shapes
Milling tool	Torus cutter	Torus copying cutter	Ball nose copying cutter	Ball nose copying cutter	Torus copying cutter	Ball nose copying cutter	Solid carbide ball nose cutter
Diameter [mm]	42	20	12	6	8	8	4
Number of teeth	3	2	2	2	2	2	2
Radius [mm]	3	4	6	3	1	4	2
Cutting speed (Vc) [m/min]	593	500	600	300	400	400	200
Revolutions [1/min]	4,500	8,000	15,900	16,000	16,000	16,000	16,000
Feedrate per tooth [mm]	0,74	0.5	0.2	0.2	0.15	0.15	0.15
Feed rate (Vf) [mm/min]	10,000	8,000	6,400	6,400	4,800	4,800	4,800
Cutting depth (ap) [mm]	5	2.5	2	0.5	0.3	0.15	0.1
Cutting Width / Line spacing (ae) [mm]	30	10	2	0.5	4	0.3	0.1

PROCESSING

- The material must be acclimatised to 18–25 °C prior to machining.
- Machining of the block is easily accomplished by sawing, milling or drilling with machines or by hand.
- Bonding areas must be clean, dry and free of dust and grease or oil.
- For bondings use e.g. Biresin® Kleber orange or Labelite Glue (for more information see Product Data Sheet).
- For correction or finishing of surface use Biresin® Spachtel orange (for more information see Product Data Sheet).

SikaBlock® M600/M680/M700

Model Board



MILLING PARAMETERS

Milling steps	1	2	3	4	5	6	7
Strategy	Roughing Z-constant	Rest material Z-constant	Rest material Z-constant	Rest material Z-constant	Finishing flat areas	Finishing Z-constant	Finishing rest material shapes
Milling tool	Torus cutter	Torus copying cutter	Ball nose copying cutter	Ball nose copying cutter	Torus copying cutter	Ball nose copying cutter	Solid carbide ball nose cutter
Diameter [mm]	42	20	12	6	8	8	4
Number of teeth	3	2	2	2	2	2	2
Radius [mm]	3	4	6	3	1	4	2
Cutting speed (Vc) [m/min]	500	500	600	300	400	400	200
Revolutions [1/min]	3,800	8,000	15,900	16,000	16,000	16,000	16,000
Feedrate per tooth [mm]	0,74	0.62	0.2	0.2	0.15	0.15	0.15
Feed rate (Vf) [mm/min]	8,400	10,000	6,400	6,400	4,800	4,800	4,800
Cutting depth (ap) [mm]	5	2.5	2	0.5	0.3	0.15	0.1
Cutting Width / Line spacing (ae) [mm]	30	10	2	0.5	4	0.3	0.1

PROCESSING

- The material must be acclimatised to 18-25 °C prior to machining.
- Machining of the block is easily accomplished by sawing, milling and so on with high performance tools or by hand.
- Bonding areas must be clean, dry and free of dust and grease or oil.
- For bondings use e.g. Biresin® Kleber braun or Prolab Glue (for more information see Product Data Sheet).
- For correction or finishing of surface use Biresin® Spachtel braun Neu (for more information see Product Data Sheet).

Prolab 65/65XL

Model Board



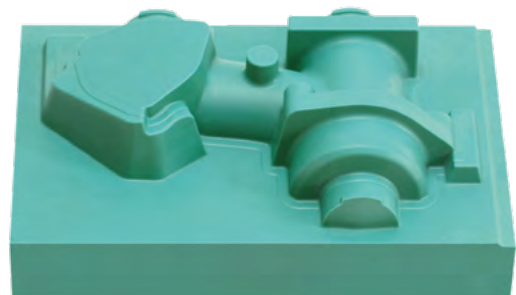
MILLING PARAMETERS							
Milling steps	1	2	3	4	5	6	7
Strategy	Roughing Z-constant	Rest material Z-constant	Rest material Z-constant	Rest material Z-constant	Finishing flat areas	Finishing Z-constant	Finishing rest material shapes
Milling tool	Torus cutter	Torus copying cutter	Ball nose copying cutter	Ball nose copying cutter	Torus copying cutter	Ball nose copying cutter	Solid carbide ball nose cutter
Diameter [mm]	42	20	12	6	8	8	4
Number of teeth	3	2	2	2	2	2	2
Radius [mm]	3	4	6	3	1	4	2
Cutting speed (Vc) [m/min]	540	500	600	300	400	400	200
Revolutions [1/min]	4,100	7,957	16,000	16,000	16,000	16,000	16,000
Feedrate per tooth [mm]	0,6	0.5	0.2	0.18	0.13	0.13	0.13
Feed rate (Vf) [mm/min]	7,380	7,957	6,366	5,760	4,160	4,160	4,160
Cutting depth (ap) [mm]	3	2	1	0.3	0.3	0.15	0.1
Cutting Width / Line spacing (ae) [mm]	30	10	2	0.5	4	0.3	0.1

PROCESSING

- The material must be acclimatised to 18–25 °C prior to machining.
- Machining of the block is easily accomplished by sawing, milling and so on with high performance tools or by hand.
- Bonding areas must be clean, dry and free of dust and grease or oil (cleaning e.g. with Sika® Reinigungsmittel 5).
- For bondings use e.g. Prolab Glue or Biresin® Kleber braun (for more information see Product Data Sheet).
- For correction or finishing of surface use Biresin® Spachtel braun Neu (for more information see Product Data Sheet).

SikaBlock® M930

Tooling Board



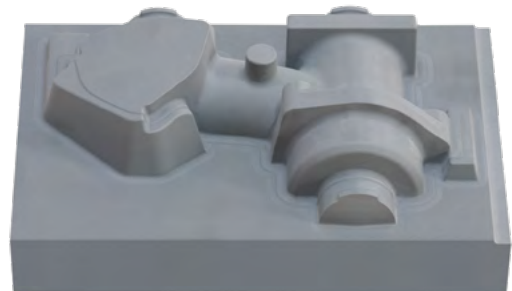
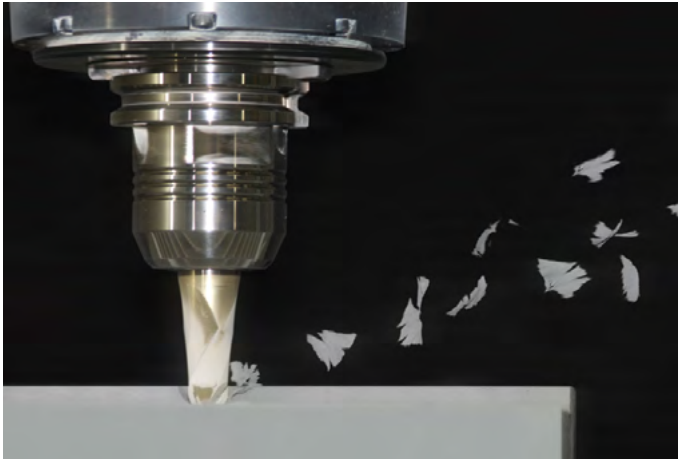
MILLING PARAMETERS							
Milling steps	1	2	3	4	5	6	7
Strategy	Roughing Z-constant	Rest material Z-constant	Rest material Z-constant	Rest material Z-constant	Finishing flat areas	Finishing Z-constant	Finishing rest material shapes
Milling tool	Torus cutter	Torus copying cutter	Ball nose copying cutter	Ball nose copying cutter	Torus copying cutter	Ball nose copying cutter	Solid carbide ball nose cutter
Diameter [mm]	42	20	12	6	8	8	4
Number of teeth	3	2	2	2	2	2	2
Radius [mm]	3	4	6	3	1	4	2
Cutting speed (Vc) [m/min]	650	650	600	250	400	400	200
Revolutions [1/min]	5,000	10,400	15,900	13,300	16,000	16,000	16,000
Feedrate per tooth [mm]	0,42	0,42	0,2	0,2	0,15	0,15	0,15
Feed rate (Vf) [mm/min]	6,300	8,800	6,400	5,300	4,800	4,800	4,800
Cutting depth (ap) [mm]	5	2,5	2	0,5	0,3	0,15	0,1
Cutting Width / Line spacing (ae) [mm]	30	10	2	0,5	4	0,3	0,1

PROCESSING

- The material must be acclimatised to 18–25 °C prior to machining.
- Machining of the block is easily accomplished by sawing, milling and so on with high performance tools or by hand.
- Bonding areas must be clean, dry and free of dust and grease or oil.
- For bondings use e.g. Biresin® Power Adhesive Thix or Biresin® Kleber grün (for more information see Product Data Sheet).

Prolab 75

Tooling Board



MILLING PARAMETERS							
Milling steps	1	2	3	4	5	6	7
Strategy	Roughing Z-constant	Rest material Z-constant	Rest material Z-constant	Rest material Z-constant	Finishing flat areas	Finishing Z-constant	Finishing rest material shapes
Milling tool	Torus cutter	Torus copying cutter	Ball nose copying cutter	Ball nose copying cutter	Torus copying cutter	Ball nose copying cutter	Solid carbide ball nose cutter
Diameter [mm]	42	20	12	6	8	8	4
Number of teeth	3	2	2	2	2	2	2
Radius [mm]	3	4	6	3	1	4	2
Cutting speed (Vc) [m/min]	500	500	600	300	400	400	200
Revolutions [1/min]	3,789	7,957	16,000	16,000	16,000	16,000	16,000
Feedrate per tooth [mm]	0.5	0.5	0.2	0.15	0.12	0.12	0.12
Feed rate (Vf) [mm/min]	5,684	7,957	6,366	4,800	3,840	3,840	3,840
Cutting depth (ap) [mm]	3	2	1	0.3	0.3	0.15	0.1
Cutting Width / Line spacing (ae) [mm]	30	10	2	0.5	4	0.3	0.1

PROCESSING

- The material must be acclimatised to 18–25 °C prior to machining.
- Machining of the block is easily accomplished by sawing, milling and so on with high performance tools or by hand.
- Bonding areas must be clean, dry and free of dust and grease or oil (cleaning e.g. with Sika® Reinigungsmittel 5).
- For bondings use e.g. Prolab Glue or Biresin® Kleber braun (for more information see Product Data Sheet).

SikaBlock® M1000/M1050

Tooling Board

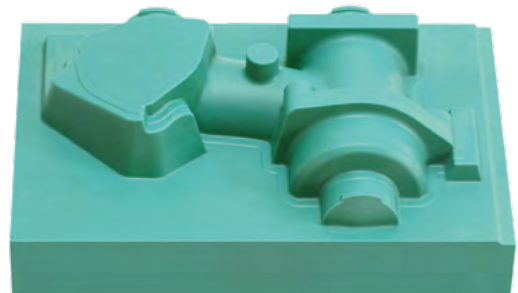


MILLING PARAMETERS							
Milling steps	1	2	3	4	5	6	7
Strategy	Roughing Z-constant	Rest material Z-constant	Rest material Z-constant	Rest material Z-constant	Finishing flat areas	Finishing Z-constant	Finishing rest material shapes
Milling tool	Torus cutter	Torus copying cutter	Ball nose copying cutter	Ball nose copying cutter	Torus copying cutter	Ball nose copying cutter	Solid carbide ball nose cutter
Diameter [mm]	42	20	12	6	8	8	4
Number of teeth	3	2	2	2	2	2	2
Radius [mm]	3	4	6	3	1	4	2
Cutting speed (Vc) [m/min]	650	650	600	250	400	400	200
Revolutions [1/min]	5,000	10,400	15,900	13,300	16,000	16,000	16,000
Feedrate per tooth [mm]	0.42	0.42	0.2	0.2	0.15	0.15	0.15
Feed rate (Vf) [mm/min]	6,300	8,800	6,400	5,300	4,800	4,800	4,800
Cutting depth (ap) [mm]	5	2.5	2	0.5	0.3	0.15	0.1
Cutting Width / Line spacing (ae) [mm]	30	10	2	0.5	4	0.3	0.1

PROCESSING

- The material must be acclimatised to 18–25 °C prior to machining.
- Machining of the block is easily accomplished by sawing, milling and so on with high performance tools or by hand.
- Bonding areas must be clean, dry and free of dust and grease or oil.
- For bondings use e.g. Biresin® Power Adhesive Thix or H9930 (for more information see Product Data Sheet).

Lab 973/Lab 975 New Tooling Board



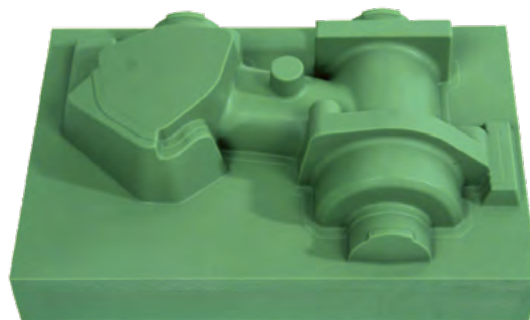
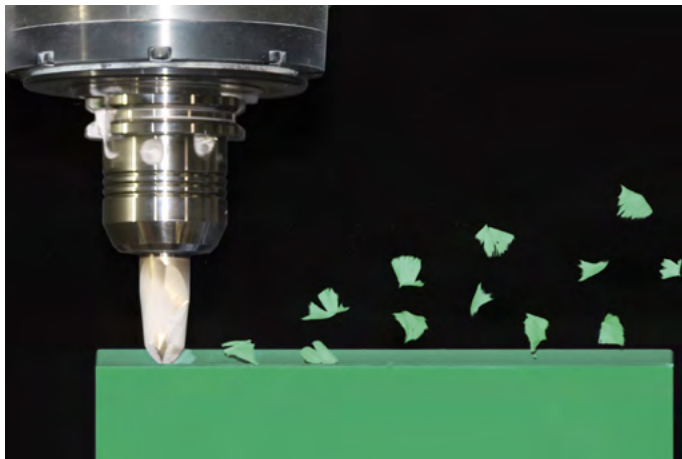
MILLING PARAMETERS							
Milling steps	1	2	3	4	5	6	7
Strategy	Roughing Z-constant	Rest material Z-constant	Rest material Z-constant	Rest material Z-constant	Finishing flat areas	Finishing Z-constant	Finishing rest material shapes
Milling tool	Torus cutter	Torus copying cutter	Ball nose copying cutter	Ball nose copying cutter	Torus copying cutter	Ball nose copying cutter	Solid carbide ball nose cutter
Diameter [mm]	42	20	12	6	8	8	4
Number of teeth	3	2	2	2	2	2	2
Radius [mm]	3	4	6	3	1	4	2
Cutting speed (Vc) [m/min]	540	500	600	300	400	400	200
Revolutions [1/min]	4,100	7,957	16,000	16,000	16,000	16,000	16,000
Feedrate per tooth [mm]	0.6	0.5	0.2	0.18	0.13	0.13	0.13
Feed rate (Vf) [mm/min]	7,380	7,957	6,366	5,760	4,160	4,160	4,160
Cutting depth (ap) [mm]	3	2	1	0.3	0.3	0.15	0.1
Cutting Width / Line spacing (ae) [mm]	30	10	2	0.5	4	0.3	0.1

PROCESSING

- The material must be acclimatised to 18–25 °C prior to machining.
- Machining of the block is easily accomplished by sawing, milling and so on with high performance tools or by hand.
- Bonding areas must be clean, dry and free of dust and grease or oil (cleaning e.g. with Sika® Reinigungsmittel 5).
- For bondings use e.g. H8973/H8973 (for more information see Product Data Sheet).

SikaBlock® M935

Tooling Board



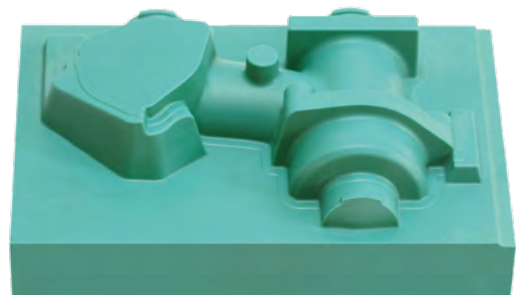
MILLING PARAMETERS							
Milling steps	1	2	3	4	5	6	7
Strategy	Roughing Z-constant	Rest material Z-constant	Rest material Z-constant	Rest material Z-constant	Finishing flat areas	Finishing Z-constant	Finishing rest material shapes
Milling tool	Torus cutter	Torus copying cutter	Ball nose copying cutter	Ball nose copying cutter	Torus copying cutter	Ball nose copying cutter	Solid carbide ball nose cutter
Diameter [mm]	42	20	12	6	8	8	4
Number of teeth	3	2	2	2	2	2	2
Radius [mm]	3	4	6	3	1	4	2
Cutting speed (Vc) [m/min]	500	500	600	300	400	400	200
Revolutions [1/min]	3,800	8,000	16,000	16,000	16,000	16,000	16,000
Feedrate per tooth [mm]	0.5	0.5	0.2	0.15	0.12	0.12	0.12
Feed rate (Vf) [mm/min]	5,700	8,000	6,400	4,800	3,800	3,800	3,800
Cutting depth (ap) [mm]	3	2	1	0.3	0.3	0.3	0.1
Cutting Width / Line spacing (ae) [mm]	30	10	2	0.5	4	0.3	0.1

PROCESSING

- The material must be acclimatised to 18–25 °C prior to machining.
- Machining of the block is easily accomplished by sawing, milling and so on with high performance tools or by hand.
- Bonding areas must be clean, dry and free of dust and grease or oil (cleaning e.g. with Sika® Reinigungsmittel 5).
- For bondings use e.g. Biresin® Power Adhesive Thix or Biresin® Kleber grün (for more information see Product Data Sheet).

SikaBlock® M945

Tooling Board



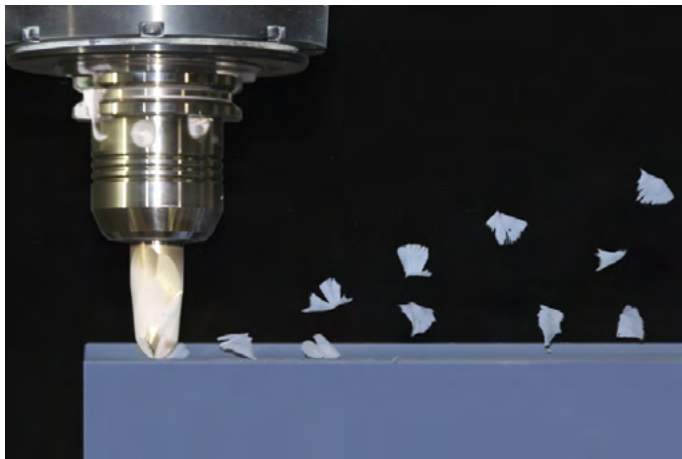
MILLING PARAMETERS							
Milling steps	1	2	3	4	5	6	7
Strategy	Roughing Z-constant	Rest material Z-constant	Rest material Z-constant	Rest material Z-constant	Finishing flat areas	Finishing Z-constant	Finishing rest material shapes
Milling tool	Torus cutter	Torus copying cutter	Ball nose copying cutter	Ball nose copying cutter	Torus copying cutter	Ball nose copying cutter	Solid carbide ball nose cutter
Diameter [mm]	42	20	12	6	8	8	4
Number of teeth	3	2	2	2	2	2	2
Radius [mm]	3	4	6	3	1	4	2
Cutting speed (Vc) [m/min]	500	500	600	300	400	400	200
Revolutions [1/min]	3,800	8,000	16,000	16,000	16,000	16,000	16,000
Feedrate per tooth [mm]	0.5	0.5	0.2	0.15	0.12	0.12	0.12
Feed rate (Vf) [mm/min]	5,700	8,000	6,400	4,800	3,800	3,800	3,800
Cutting depth (ap) [mm]	3	2	1	0.3	0.3	0.15	0.1
Cutting Width / Line spacing (ae) [mm]	30	10	2	0.5	4	0.3	0.1

PROCESSING

- The material must be acclimatised to 18–25 °C prior to machining.
- Machining of the block is easily accomplished by sawing, milling and so on with high performance tools or by hand.
- Bonding areas must be clean, dry and free of dust and grease or oil (cleaning e.g. with Sika® Reinigungsmittel 5).
- For bondings use e.g. Biresin® Power Adhesive Thix or Biresin® Kleber grün (for more information see Product Data Sheet).

SikaBlock® M960

Tooling Board



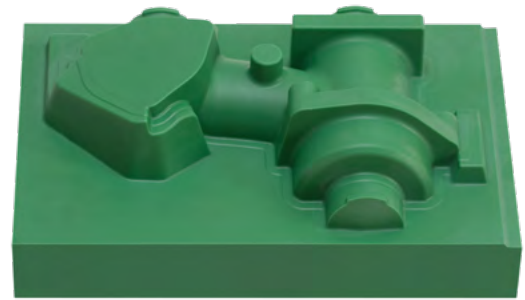
MILLING PARAMETERS							
Milling steps	1	2	3	4	5	6	7
Strategy	Roughing Z-constant	Rest material Z-constant	Rest material Z-constant	Rest material Z-constant	Finishing flat areas	Finishing Z-constant	Finishing rest material shapes
Milling tool	Torus cutter	Torus copying cutter	Ball nose copying cutter	Ball nose copying cutter	Torus copying cutter	Ball nose copying cutter	Solid carbide ball nose cutter
Diameter [mm]	42	20	12	6	8	8	4
Number of teeth	3	2	2	2	2	2	2
Radius [mm]	3	4	6	3	1	4	2
Cutting speed (Vc) [m/min]	500	500	600	250	400	400	200
Revolutions [1/min]	3,800	8,000	15,900	13,300	16,000	16,000	16,000
Feedrate per tooth [mm]	0.5	0.5	0.2	0.2	0.15	0.15	0.15
Feed rate (Vf) [mm/min]	5,700	8,000	6,400	5,300	4,800	4,800	4,800
Cutting depth (ap) [mm]	5	2.5	2	0.5	0.3	0.15	0.1
Cutting Width / Line spacing (ae) [mm]	30	10	2	0.5	4	0.3	0.1

PROCESSING

- The material must be acclimatised to 18–25 °C prior to machining.
- Machining of the block is easily accomplished by sawing, milling and so on with high performance tools or by hand.
- Bonding areas must be clean, dry and free of dust and grease or oil (cleaning e.g. with Sika® Reinigungsmittel 5).
- For bondings use e.g. Biresin® Power Adhesive Thix or Biresin® Kleber blau (for more information see Product Data Sheet).

Lab 920

Tooling Board



MILLING PARAMETERS

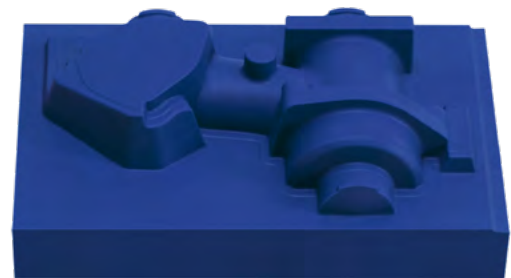
Milling steps	1	2	3	4	5	6	7
Strategy	Roughing Z-constant	Rest material Z-constant	Rest material Z-constant	Rest material Z-constant	Finishing flat areas	Finishing Z-constant	Finishing rest material shapes
Milling tool	Torus cutter	Torus copying cutter	Ball nose copying cutter	Ball nose copying cutter	Torus copying cutter	Ball nose copying cutter	Solid carbide ball nose cutter
Diameter [mm]	42	20	12	6	8	8	4
Number of teeth	3	2	2	2	2	2	2
Radius [mm]	3	4	6	3	1	4	2
Cutting speed (Vc) [m/min]	500	500	600	300	400	400	200
Revolutions [1/min]	3,789	8,355	16,000	16,000	16,000	16,000	16,000
Feedrate per tooth [mm]	0.5	0.48	0.2	0.15	0.12	0.12	0.12
Feed rate (Vf) [mm/min]	5,684	7,957	6,366	4,800	3,840	3,840	3,840
Cutting depth (ap) [mm]	3	2	1	0.3	0.3	0.15	0.1
Cutting Width / Line spacing (ae) [mm]	30	10	2	0.5	4	0.3	0.1

PROCESSING

- The material must be acclimatised to 18–25 °C prior to machining.
- Machining of the block is easily accomplished by sawing, milling and so on with high performance tools or by hand.
- Bonding areas must be clean, dry and free of dust and grease or oil (cleaning e.g. with Sika® Reinigungsmittel 5).
- For bondings use e.g. Biresin® Power Adhesive Thix or H9930 (for more information see Product Data Sheet).

Lab 850

Tooling Board



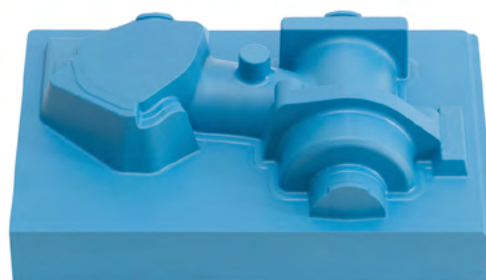
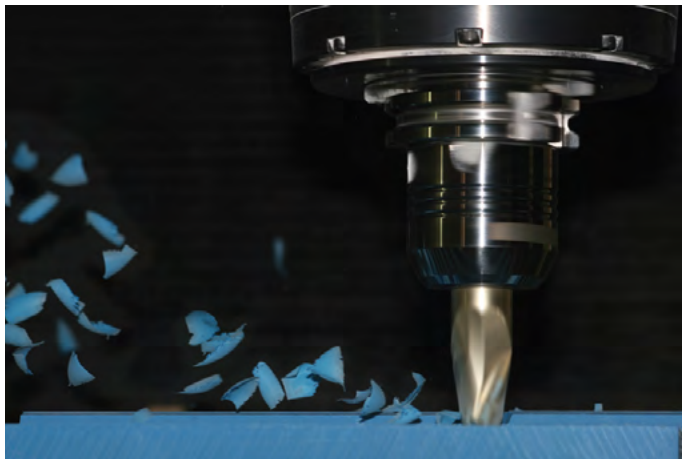
MILLING PARAMETERS							
Milling steps	1	2	3	4	5	6	7
Strategy	Roughing Z-constant	Rest material Z-constant	Rest material Z-constant	Rest material Z-constant	Finishing flat areas	Finishing Z-constant	Finishing rest material shapes
Milling tool	Torus cutter	Torus copying cutter	Ball nose copying cutter	Ball nose copying cutter	Torus copying cutter	Ball nose copying cutter	Solid carbide ball nose cutter
Diameter [mm]	42	20	12	6	8	8	4
Number of teeth	3	2	2	2	2	2	2
Radius [mm]	3	4	6	3	1	4	2
Cutting speed (Vc) [m/min]	500	500	600	300	400	400	200
Revolutions [1/min]	3,789	7,957	16,000	16,000	16,000	16,000	16,000
Feedrate per tooth [mm]	0.4	0.5	0.2	0.15	0.12	0.12	0.1
Feed rate (Vf) [mm/min]	4,547	7,957	6,366	4,800	3,840	3,840	3,200
Cutting depth (ap) [mm]	3	2	1	0.3	0.3	0.15	0.1
Cutting Width / Line spacing (ae) [mm]	30	10	2	0.5	4	0.3	0.1

PROCESSING

- The material must be acclimatised to 18–25 °C prior to machining.
- Machining of the block is easily accomplished by sawing, milling and so on with high performance tools or by hand.
- Bonding areas must be clean, dry and free of dust and grease or oil (cleaning e.g. with Sika® Reinigungsmittel 5).
- For bondings use e.g. Biresin® Power Adhesive Thix or H9930 (for more information see Product Data Sheet).

SikaBlock® M980

Tooling Board



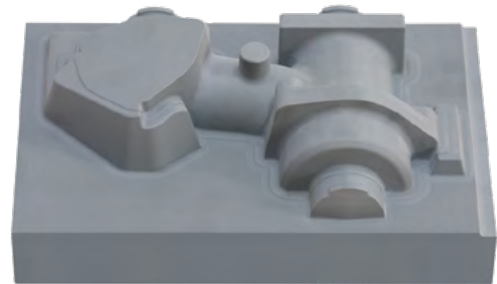
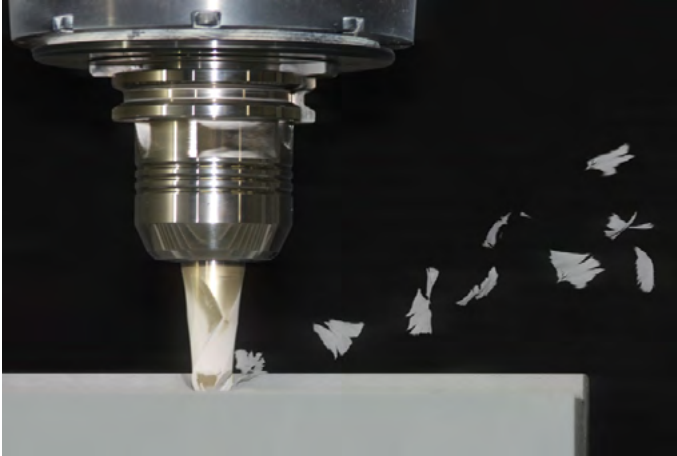
MILLING PARAMETERS							
Milling steps	1	2	3	4	5	6	7
Strategy	Roughing Z-constant	Rest material Z-constant	Rest material Z-constant	Rest material Z-constant	Finishing flat areas	Finishing Z-constant	Finishing rest material shapes
Milling tool	Torus cutter	Torus copying cutter	Ball nose copying cutter	Ball nose copying cutter	Torus copying cutter	Ball nose copying cutter	Solid carbide ball nose cutter
Diameter [mm]	42	20	12	6	8	8	4
Number of teeth	3	2	2	2	2	2	2
Radius [mm]	3	4	6	3	1	4	2
Cutting speed (Vc) [m/min]	500	500	600	300	400	400	200
Revolutions [1/min]	3,800	8,000	15,900	16,000	16,000	16,000	16,000
Feedrate per tooth [mm]	0.5	0.5	0.2	0.15	0.1	0.1	0.1
Feed rate (Vf) [mm/min]	5,700	8,000	6,400	4,800	3,200	3,200	3,200
Cutting depth (ap) [mm]	5	2.5	2	0.5	0.3	0.15	0.1
Cutting Width / Line spacing (ae) [mm]	30	10	2	0.5	4	0.3	0.1

PROCESSING

- The material must be acclimatised to 18-25 °C prior to machining.
- Machining of the block is easily accomplished by sawing, milling and so on with high performance tools or by hand.
- Bonding areas must be clean, dry and free of dust and grease or oil (cleaning e.g. with Sika® Reinigungsmittel 5).
- For bondings use e.g. Biresin® Power Adhesive Thix or Biresin® Kleber blau (for more information see Product Data Sheet).

Lab 1000

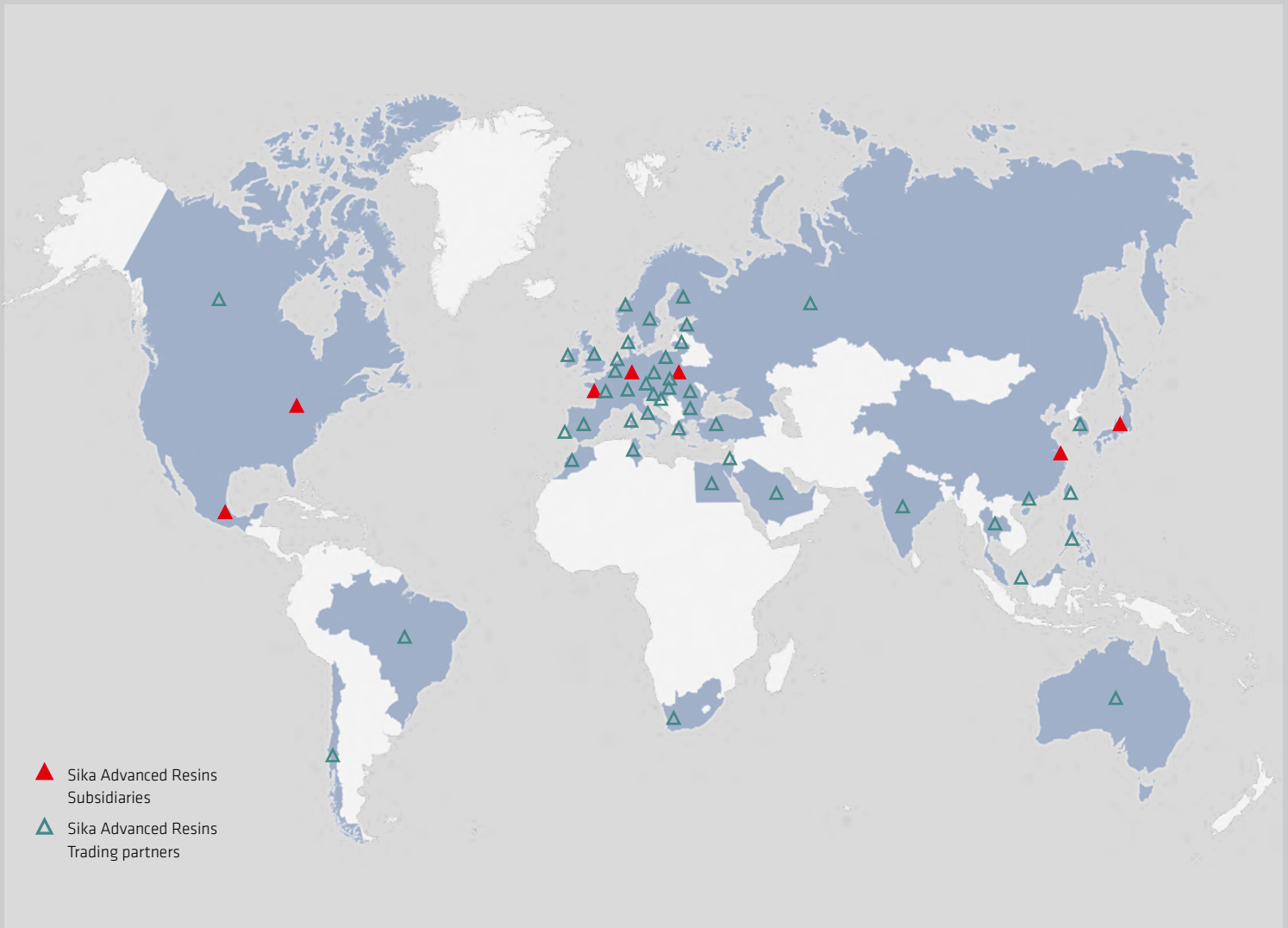
Tooling Board



MILLING PARAMETERS							
Milling steps	1	2	3	4	5	6	7
Strategy	Roughing Z-constant	Rest material Z-constant	Rest material Z-constant	Rest material Z-constant	Finishing flat areas	Finishing Z-constant	Finishing rest material shapes
Milling tool	Torus cutter	Torus copying cutter	Ball nose copying cutter	Ball nose copying cutter	Torus copying cutter	Ball nose copying cutter	Solid carbide ball nose cutter
Diameter [mm]	42	20	12	6	8	8	4
Number of teeth	3	2	2	2	2	2	2
Radius [mm]	3	4	6	3	1	4	2
Cutting speed (Vc) [m/min]	500	500	600	300	400	400	200
Revolutions [1/min]	3,800	8,000	15,900	16,000	16,000	16,000	16,000
Feedrate per tooth [mm]	0.5	0.5	0.2	0.15	0.1	0.1	0.1
Feed rate (Vf) [mm/min]	5,700	8,000	6,400	4,800	3,200	3,200	3,200
Cutting depth (ap) [mm]	3	2	1	0.3	0.3	0.15	0.1
Cutting Width / Line spacing (ae) [mm]	30	10	2	0.5	4	0.3	0.1

PROCESSING

- The material must be acclimatised to 18–25 °C prior to machining.
- Machining of the block is easily accomplished by sawing, milling and so on with high performance tools or by hand.
- Bonding areas must be clean, dry and free of dust and grease or oil (cleaning e.g. with Sika® Reinigungsmittel 5).
- For bondings use e.g. Biresin® Power Adhesive Thix or H9930 (for more information see Product Data Sheet).



GLOBAL SOLUTIONS – LOCAL SERVICE

Our most current General Sales Conditions shall apply.

Please consult the Product Data Sheet prior to any use and processing.

Actual Product Data Sheets and information about additional products please find in:
www.sikaadvancedresins.com



Sika Deutschland GmbH
Sika Advanced Resins
 Stuttgarter Strasse 139
 D-72574 Bad Urach
 Germany
 Phone: + 49 (0) 7125 940-492
 Fax: + 49 (0) 7125 940-401
 E-Mail: tooling@de.sika.com
www.sikaadvancedresins.com

Sika Automotive France SAS
Sika Advanced Resins
 Z.I. des Béthunes - 15 rue de l'Équerre
 CS 40444 Saint Ouen l'Aumône
 95005 Cergy Pontoise Cedex - France
 Phone: +33 (0) 134 40 34 60
 Fax: +33 (0) 134 21 97 87
 E-Mail: advanced.resins@fr.sika.com
www.sikaadvancedresins.fr

BUILDING TRUST

